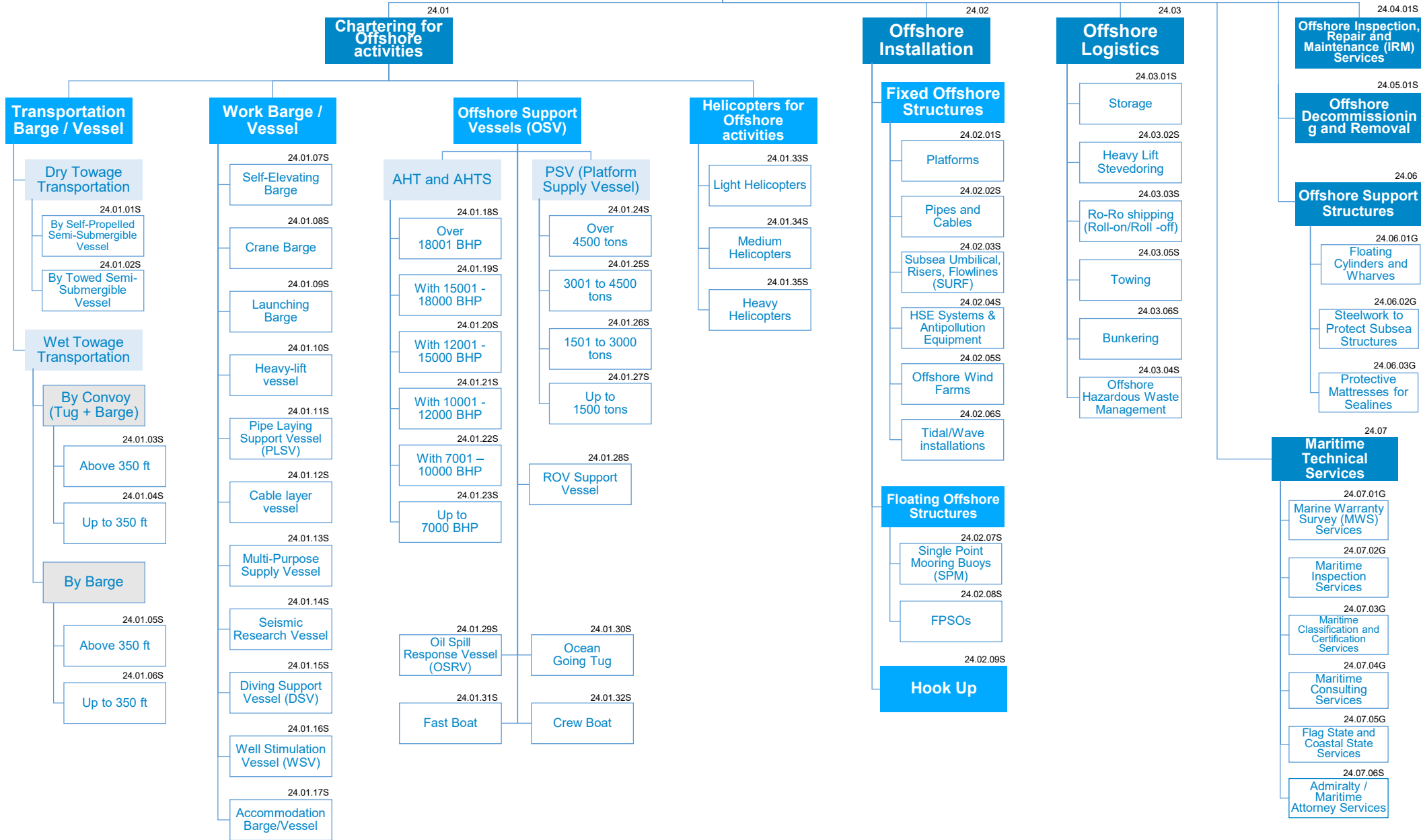


Marine Contracting and Installation



Marine Contracting and Installation

Offshore Installation services and Marine Contracting are complex services delivered through ad-hoc assets (vessels, barges, helicopters, ...), mainly for the Oil&Gas, Renewables and Telecommunication industry. They can be spot services, as well as multi-year contracts.

Some of the vessels deployed for this services require specific equipment to the offshore functionality (e.g. pipe-laying systems, diving systems, ...): such equipment are mapped in other Group (e.g. 21 and 22)

MAIN RATIONALES BEHIND THE STANDARD CATEGORIZATION

Chartering for Offshore activities

- Anchor Handling Towing Supply Vessel (AHTS) are highly versatile large, powerful Anchor Handling Towing Supply vessels, capable of all types of towing and anchor handling activities. AHTS are able to position and moor drilling rigs under challenging conditions. They also provide general offshore support service, drilling rig support functions and cargo transport.
- Platform Supply Vessels (PSV) carry a wide variety of cargoes, namely: fuel, drilling fluids, cement or mud (stored in tanks beneath the deck). Decks transport materials such as casing, drill pipe & tubing.
- Some of the Work Barge / Vessel are frequently associated with the broad family of Construction Support Vessels (CSV).
- Regarding Helicopters for Offshore activities, they are generally divided according to their max gross weight. However, not official reference on classification exist. Another possible definition is according to the number of passenger seats:
 - Light, up to 6000 lbs, less than 9 passenger seats;
 - Medium, 3500 to 12500 lbs, 10-18 passenger seats;
 - Heavy, above 12500, 19 or more passenger seats.

Offshore Installation

- Offshore construction is the installation of structures and facilities in a marine environment, usually for the production and transmission of electricity, oil, gas and other resources.

Offshore Logistics

- Offshore support terminals are the intermediaries between platforms and suppliers for oil companies.
 - Beside the transportation of goods and people, provides storage services, anchorage, residues treatment, answer to emergencies, ...
 - The main components of an offshore support terminal are the pier and cranes, silos, and storage space
- The Offshore Hook-Up is the activity of connecting the various modules together, including piping, electrical cables, structures, ...

Offshore Inspection, Repair and Maintenance (IRM) Services

- Comprehensive subsea inspection services for pipelines, risers, platforms, hulls and moorings leverage on vessels and on ROVs together with experienced teams of surveyors, inspection engineers supported by specialised software tools.

Offshore Decommissioning and Removal

- It embraces a large set of activities: seek approval services, clean services, treat/ store hazardous waste, remove offshore (lift), dispose onshore, site clearance, monitor residual liabilities.
- To be detailed in the next revisions.

Offshore Support Structures

- Offshore Support Structures that require more complex EPCI works (e.g. tripods for offshore wind farms, ...) are mapped in the Engineering, Procurement and Construction Group.