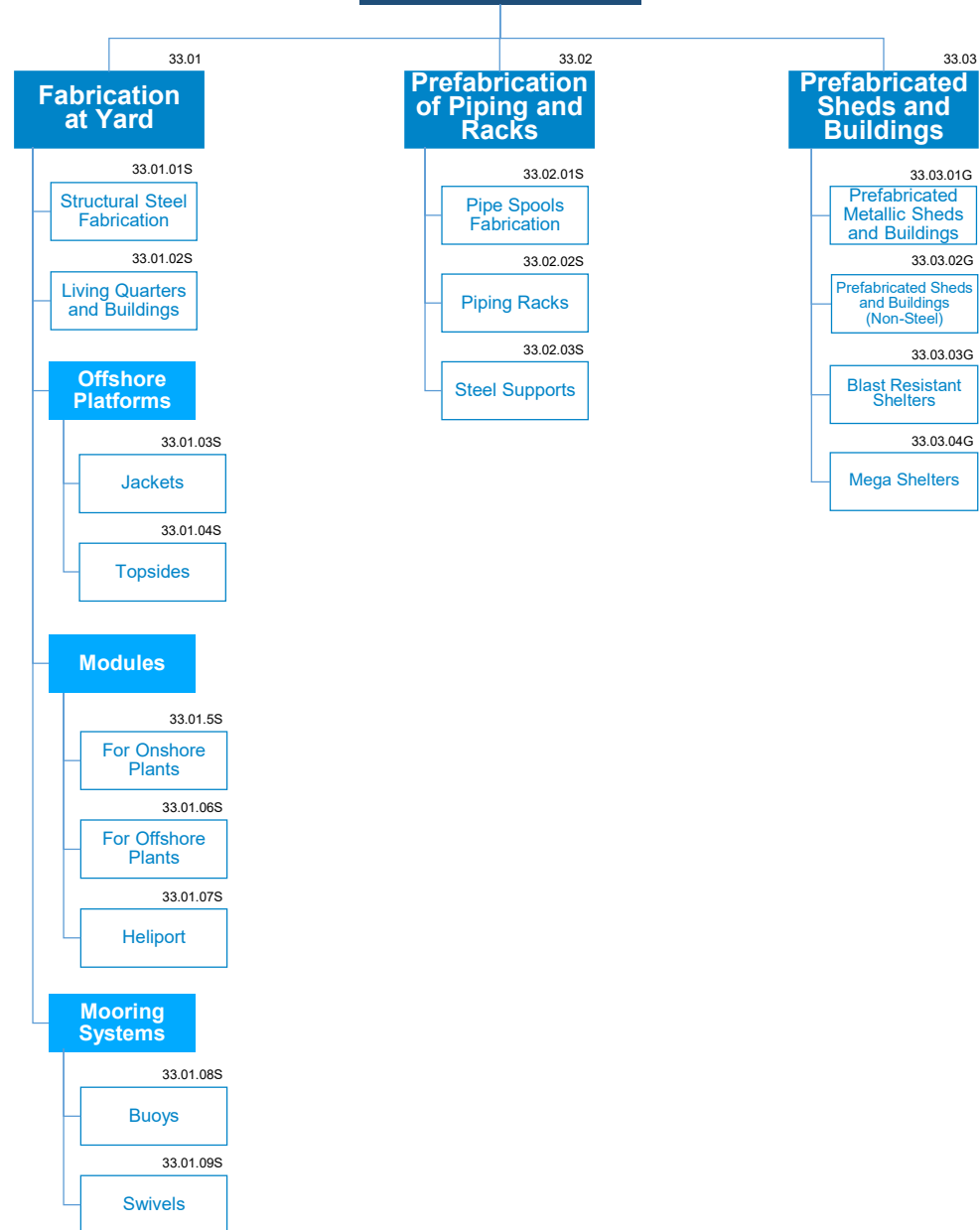


Fabrication



Fabrication

Fabrication is the manufacturing and value added processes that involve the construction of structures and systems from various raw materials and components that is performed in a different location - properly equipped – at other than the final destination.

It covers fabrication activities at yard and also prefabricated items and structures such as piping, racks, sheds and buildings

MAIN RATIONALES BEHIND THE STANDARD CATEGORIZATION

Fabrication at Yard

- This family refers to goods and services fabricated and provided at yard.
- 33.01.01S "Structural Steel Fabrication" relates to the construction of a structure made of steel that has a profile formed with a specific cross sections fabricated at yard
- 33.01.02S "Living Quarters and Buildings" refers to buildings, usually built from steel, that include a section or area dedicated to house a crew of people
- 33.01.03S "Jackets" refers to the steel frame supporting the deck and the topsides in a fixed offshore
- 33.01.04S "Topsides" refers to the upper half of the structure, above the sea level (offshore), outside the splash zone, on which equipment is installed
- Modules refers to the process of building and constructing equipment off-site in a fabrication facility. The completed product can then be delivered to the worksite and quickly installed and integrated into field operations. This differs from on-site construction in which the equipment or system is fully built at the worksite, the categories are 33.01.05S "For Onshore Plants" and 33.01.06S "For Subsea Plants"
- 33.01.07S "Heliport" is a modular manufactured structure made out of steel or aluminium that can be either installed onshore or offshore used to land helicopters
- 33.01.08S "Buoys" refers to a mooring system in the form of an anchored float that can serve as a navigation mark, show reefs or other type of hazard that might need to be highlighted
- 33.01.09S "Swivels" refers to a mooring system that joins two chain cables of a moored ship near the bow in such a way as to keep them from becoming twisted or entangled

Prefabrication of Piping and Racks

- This family covers piping, which are considered as lengths of pipe made of metal, plastic, or other materials, as well as piping racks and steel supports
- 33.02.01S Pipe Spools fabrication refers to the production of prefabricated components using various types of raw pipes and pipe fittings, including flanges, elbows, tees, and other elements. This category may take into account roll fitting and welding
- 33.02.02S Piping Racks refers to structures that can support pipes, power cables, instrumental cable trays, mechanical equipment, vessels or valve access platforms at a given site
- 33.02.03S Steel Supports are elements made out of steel designed to rest the load of the pipe, which includes the weight of the pipe itself, the material carried by the pipe, fittings attached to pipe and pipe covering

Prefabricated Sheds and Buildings

- This family relates to sheds and buildings that are delivered to the site as prefabricated
- "Prefabricated Metallic Sheds" include any size of building made out of metal and fabricated somewhere other than the site; the use intended for these buildings ranges from storing items or performing work inside
- "Prefabricated Buildings (Non Steel)" refers to non-steel buildings that are manufactured and constructed by placing together factory-made components or units that are transported and assembled on-site to form the complete building
- "Supply Erection of Accommodation Camps" and "Supply of Accommodation Camps" refer to the design, supply and build of camp, featuring office space and accommodation for the workforce that can be transported wherever needed
- Blast Resistant Shelters are API 756 compliant
- Mega Shelters are designed to cover large site work areas: excavation and site prep; concrete foundation work; structural fabrication work; large enough for equipment to operate safely inside
- "Porta Cabins for Mobile" refers to cabins that can be lifted and transported, designed to be placed where no civil foundation has been implemented
- "Technical Containers" refers to flexible and modular system for the transport of equipment on vehicles
- "Equipment and Apparatus for Kitchens and Canteens" refers to technical appliances to install in areas where workers will be cooking and dining. Examples of this are stoves, ranges, ovens, refrigerators, tables, chairs, etc.