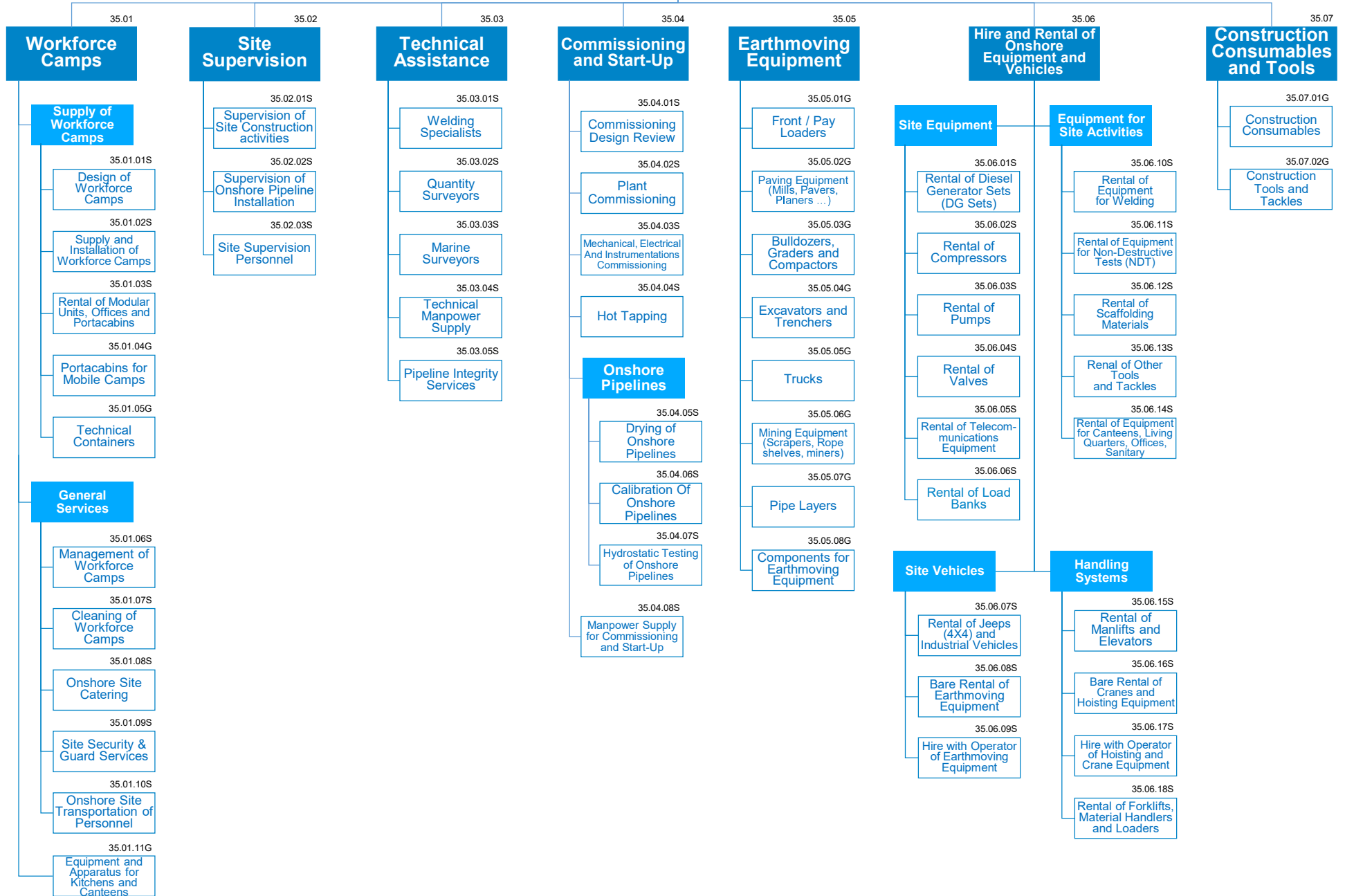


# Site Services



# Site Services

Activities at Construction Sites, Fabrication Yards and Manufacturing Plant require an heterogeneous set of services that are delivered by specialized and focused vendors, at local and global level: they range from the support to Engineering on-site activities till the hire and rental of site equipment.

Activities of Testing and Analysis are covered under a dedicated Group

## MAIN RATIONALES BEHIND THE STANDARD CATEGORIZATION

### Site Supervision

- Site Supervision Personnel can be temporary as well permanent. It may also involves the site manager's role that is typically in charge of the supervision and management of all site-based staff employed by the company to ensure that the project is delivered within their contractual obligations.

### Technical Assistance at Site

- A Quantity Surveyor (QS) is a construction industry professional with expert knowledge on construction costs and contracts. They are not to be confused with Land Surveyors or Land Survey Engineers. Services provided by a quantity surveyor may include: Cost consulting and Cost estimating.
- A Marine Surveyor (including "Yacht & Small Craft Surveyor", "Hull & Machinery Surveyor" and/or "Cargo Surveyor") is a person who conducts inspections, surveys or examinations of marine vessels to assess, monitor and report on their condition and the products on them, as well as inspects damage caused to both vessels and cargo.
- Technical Manpower Supply grants access to suitably trained, qualified and experienced professionals for onshore and offshore site activities; it doesn't cover Site Supervision Personnel
- Offshore Site Canteen and Catering is covered under the Group (Marine Contracting and Installation); Canteen and Security for offices (not site) are covered under Group 45 (General Services)

### Commissioning and Start-Up

- Site Commissioning is the process of assuring that all systems and components of a building or industrial plant are designed, installed, tested, operated, and maintained according to the operational requirements of the owner or final client; a commissioning process may be applied not only to new projects but also to existing units and systems subject to expansion, renovation or revamping.
- "Commissioning Design Review" involves agents that inspect and test building systems early in the design process near the end of the construction phase and has become a valued addition to the building owner's repertoire to ensure that a project is delivered successfully.

- "Hot Tapping", or Pressure Tapping, is the method of making a connection to existing piping or pressure vessels without the interruption of emptying that section of pipe or vessel. This means that a pipe or tank can continue to be in operation whilst maintenance or modifications are being done to it.
- Hydrostatic Test for pressure vessels, plumbing, gas cylinders, boilers and fuel tanks is covered under Group 36 ("Testing and Analysis")
- Manpower Supply covers the need for the hiring of manpower for Commissioning phase

### Earthmoving Equipment

- Earthmoving Equipment includes the main equipment used in the construction or industrial world.
- The categories of this family are mainly split based on their applications
- Components for Earthmoving Equipment includes replacement parts and attachments used on different types of construction and earthmoving equipment

### Hire and Rental of Site Equipment

- This Family of Categories includes all hire and rental services for equipment and vehicles for onshore utilization.
- The purchase of the original equipment are included under other Groups
  - Diesel Generator Sets under "Engines, Motors, Generators and Drives" (14) Group
  - Compressors in the "Compressors" (09) Group
  - Pumps purchases under the "Pumps" (08) Group
  - Valves purchases are listed under the "Valves" (05) Group
  - Telecommunication under the "Telecommunications" (07) Group
  - Elevators / Manlifts are classified under Family 04.02
  - "Hoists and Cranes" and "Forklift" are listed in the "Solids Handling" family (04.02)

- "Load banks" refers to devices designed to provide electrical loads for testing various power sources and/or to support diesel generators activity
- "Material Handler" includes those machines, typically equipped with hydraulic arms, suited to scrap sorting and handling, millyard applications, ...
- "Loaders" refers to heavy equipment machines used in construction to move aside or load materials such as asphalt, demolition debris, dirt, snow, feed, gravel, logs, raw minerals, recycled material, rock, sand, woodchips, etc. into or onto another type of machinery. This category includes: bucket loader, front loader, front-end loader, payload, scoop, shovel, skip loader, wheel loader, or skid-steer
- "Rental of Scaffolding Materials" here refers to the rental of pipe, while "Scaffoldings" (32.07.05S) includes scaffolding works provided by subcontractors at site and "Pipes for Scaffolding" (Group 12) focuses on the purchase of the pipes
- Purchases for canteen and kitchen equipment are included in "Equipment and Apparatus for Kitchens, Bars and Canteens" (33.03.05G) for Prefabricated Buildings, Sheds and Caravans, and "Kitchen Equipment and Furniture" (45.04.06G)
- Welding Equipment purchases are listed under "Welding Machines and Systems" (39.02)
- Purchases concerning Non-Destructive-Tests (NDT) are classified under "Equipment and Consumables for Non-Destructive-Tests" (39.06)
- "Other Tools and Tackles" does not include "Facility Management Tools and Tackles" (44.01.02S)
- Rental expenses associated to general purpose vehicles are listed under "Means of Transport" (45.02) in the "General Services" Group.

### Construction Consumables and Tools

- Construction Consumables and Tools and Tackles cover the materials used up during construction activities, e.g. small hand tools, flash lights, batteries and light bulbs, rope, slings and cables, fasteners, cleaning supplies (e.g. rags, brooms, mops, ...), spray paint and material tagging devices, caulking, tape and patching compounds, shims and grout, plastic sheeting and tarps, lumber, ...
- Welding consumables are under Group 36