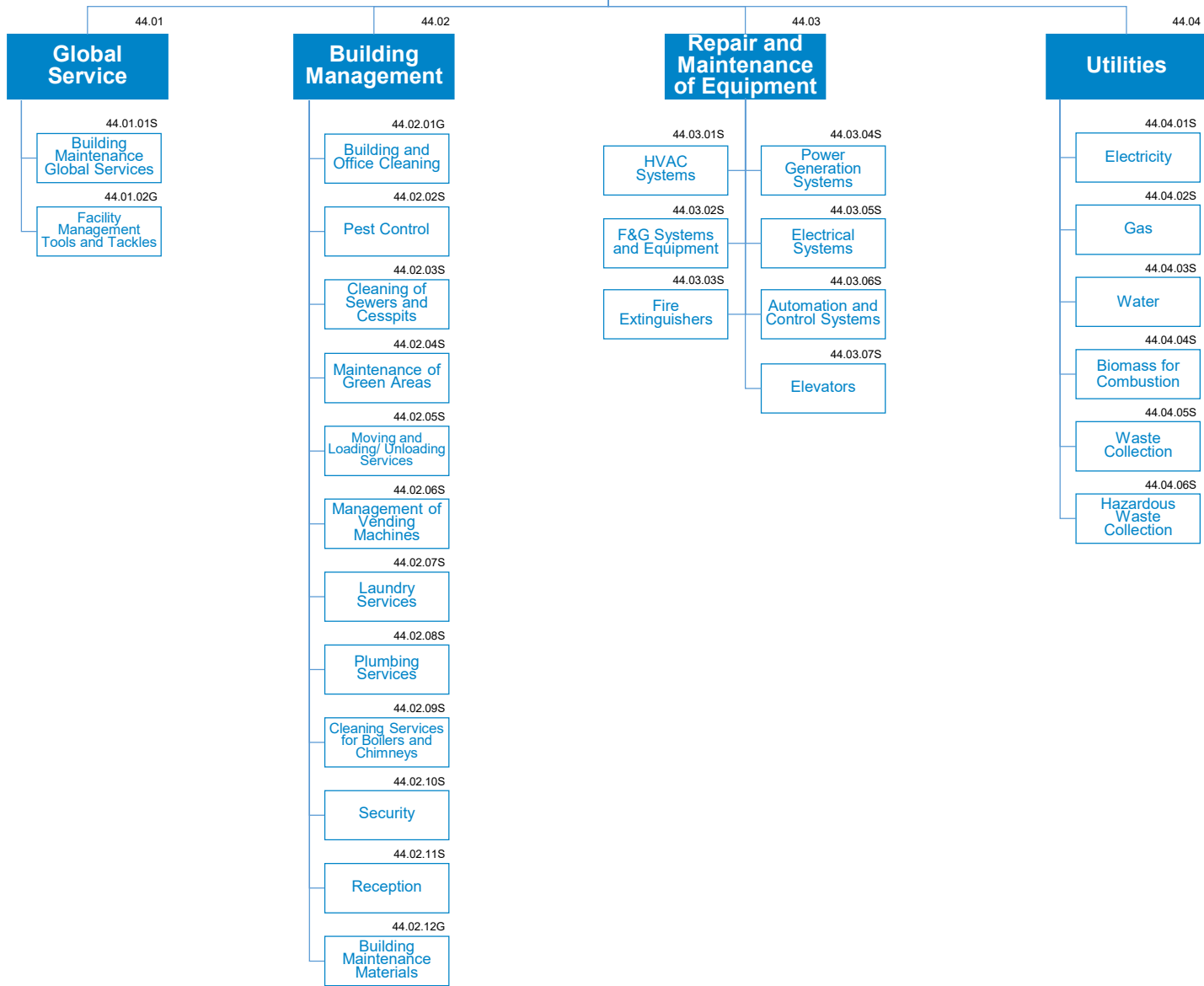


Facility Management



Facility Management

This Group of Categories covers all the goods and services concerned with the successful and profitable maintenance, operation, and monitoring of buildings or properties.

While “Global Service” and “Building Management” focus on the structural part of the buildings, “Repair and Maintenance of Equipment” refers to those items associated to the facilities. Finally, the “Utilities” category encompasses all the expenses sustained for Energy and Water supply as well as for Waste Collection.

MAIN RATIONALES BEHIND THE STANDARD CATEGORIZATION

Global Service

- This Family includes all services and tools employed to maintain and preserve facilities building from a structural standpoint
- “Building Maintenance and Global Services” does not include ordinary and extraordinary cleaning services, “Plumbing Services” (44.02.08S), and “Maintenance of Green Areas” (44.02.04S)
- Materials employed for Building Maintenance are classified under the “Building Management” family (44.02.12G)

Building Management

- This Family refers to the management of buildings in their structural parts
- “Building and Office Cleaning” only refers to buildings and does not include items such as “Chemical Cleaning” (22.04.02S) or “Cleaning of Living Camps” (35.04.05S)
- “Security” exclusively refers to building security and does not include cyber nor site security

Repair and Maintenance of Equipment

- This Family includes all the expenses related to repair and maintenance of equipment as opposed to buildings structural parts
- “Automation and Control Systems” include industrial automation, motion control systems, etc.
- All voices do not include the separate purchase of spare parts

Utilities

- This Family contains utilities expenses for all facilities and assets including vehicles and emergency diesel generator sets. Fuel Bunkering is covered under the Group 24 (“Marine Contracting and Installation Services”)
- Biomass for Combustion is the burning of organic material used to heat greenhouses